



KingSpec 2.5" SATA Interface SSD (K9HCG08*16PCS) Testing Report

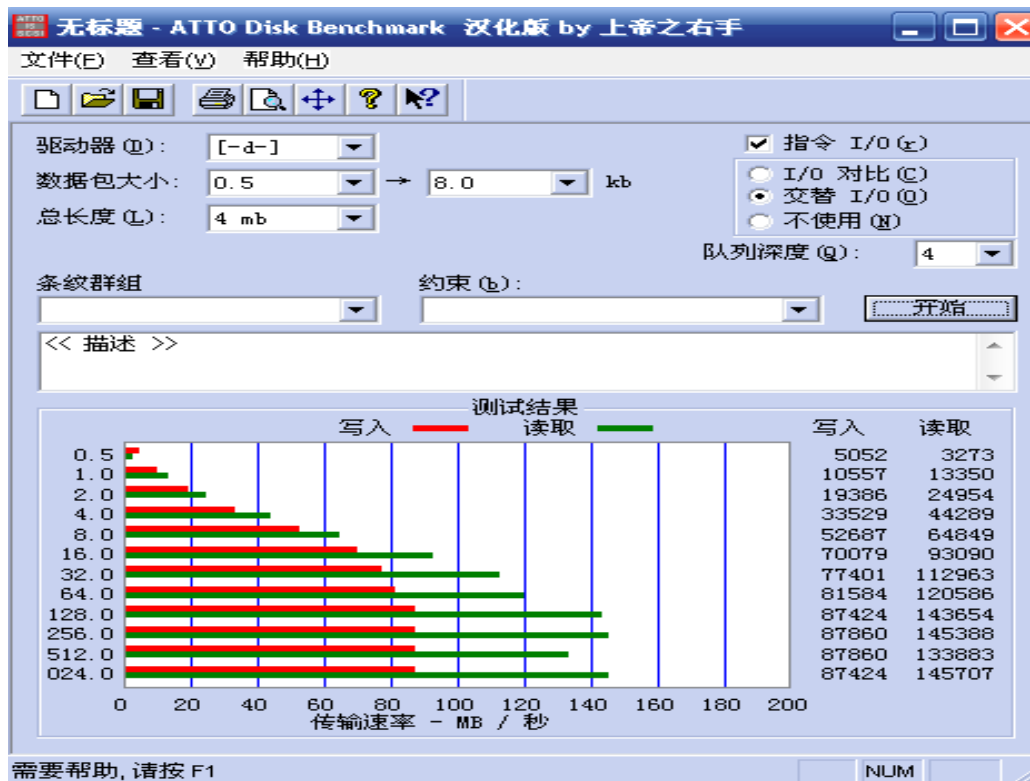
1. Testing Platform

The image displays four screenshots of the CPU-Z software interface, showing various system specifications:

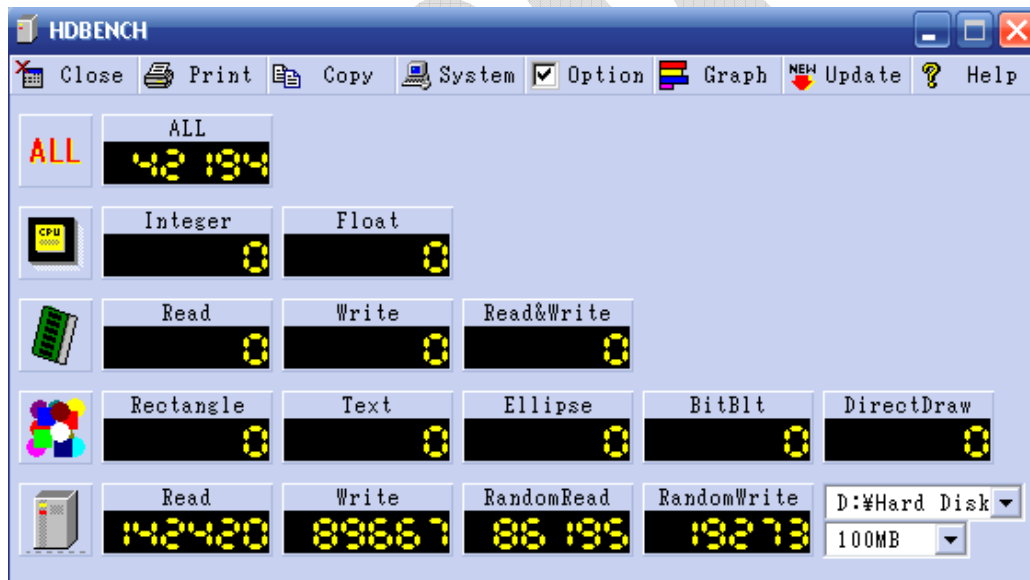
- Processor Screenshot:** Shows the CPU as AMD Athlon 64 3000+, Orleans core, Socket AM2 (940), 90 nm process, and 1.328 V core voltage. It also lists cache sizes (64 KBytes L1, 512 KBytes L2) and clock speeds (1808.4 MHz core, 200.9 MHz bus).
- Motherboard Screenshot:** Shows the motherboard as BIostar Group NF520-A2 TE, featuring NVIDIA nForce 520 chipsets and an ITE IT8716 LPCIO.
- Memory Screenshot:** Shows memory slot #3 populated with a DDR2 module, 512 MBytes, PC2-5300 (333 MHz), Kingmax Semiconductor, part number KLCC28F-A8KB5.
- Timing Screenshot:** Shows memory timing parameters such as DRAM frequency (301.4 MHz), CAS# delay (5.0 ns), and RAS# to CAS# delay (5 ns).



2. ATTO Disk Benchmark Testing Result:

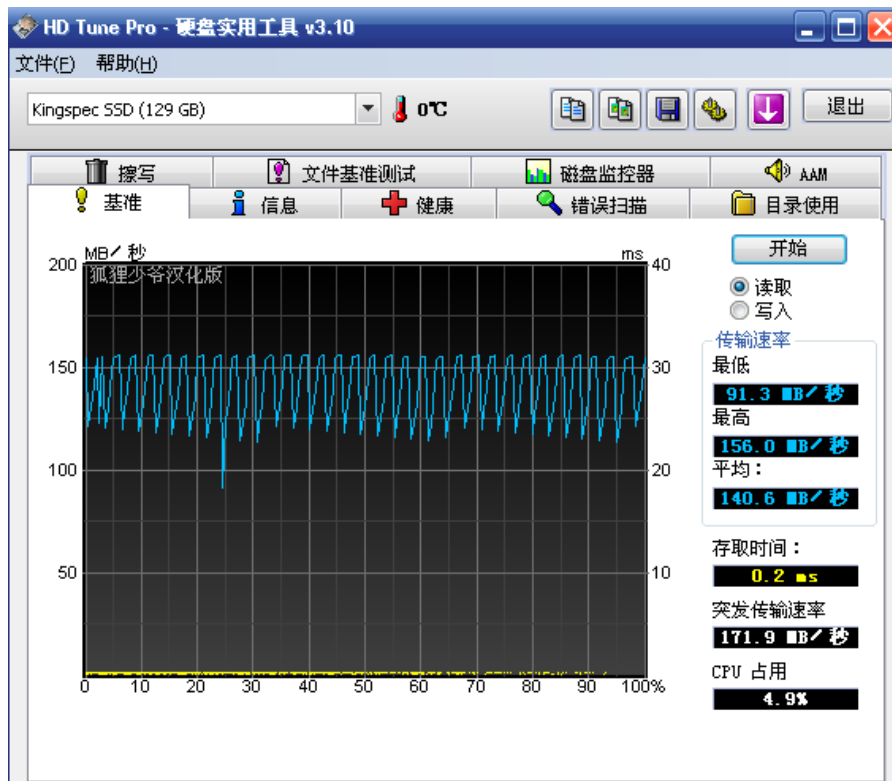


3. HDBENCH Testing Result:

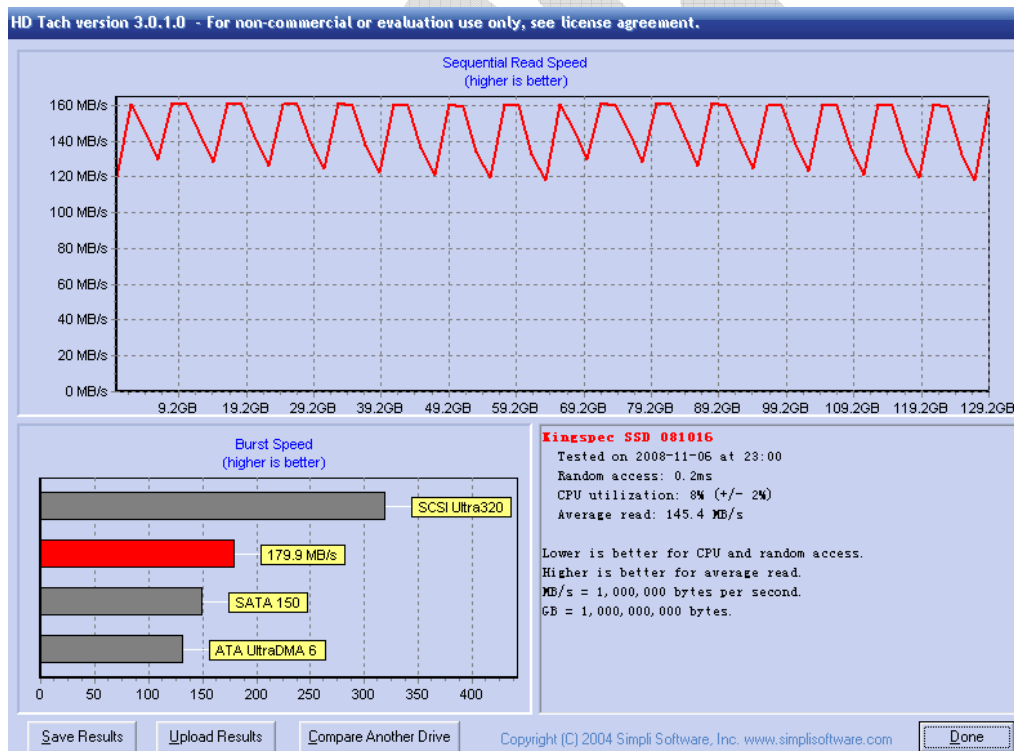




4. HD Tune Testing Result:



5. HD TACH Testing Result





6. CrystalDiskMark Testing Result:

