

# KingSpec 2.5" SATA Interface SSD (K9WAG\*16PCS) Testing Report

## 1. Testing Platform



The image displays four screenshots of the CPU-Z utility, showing various system specifications:

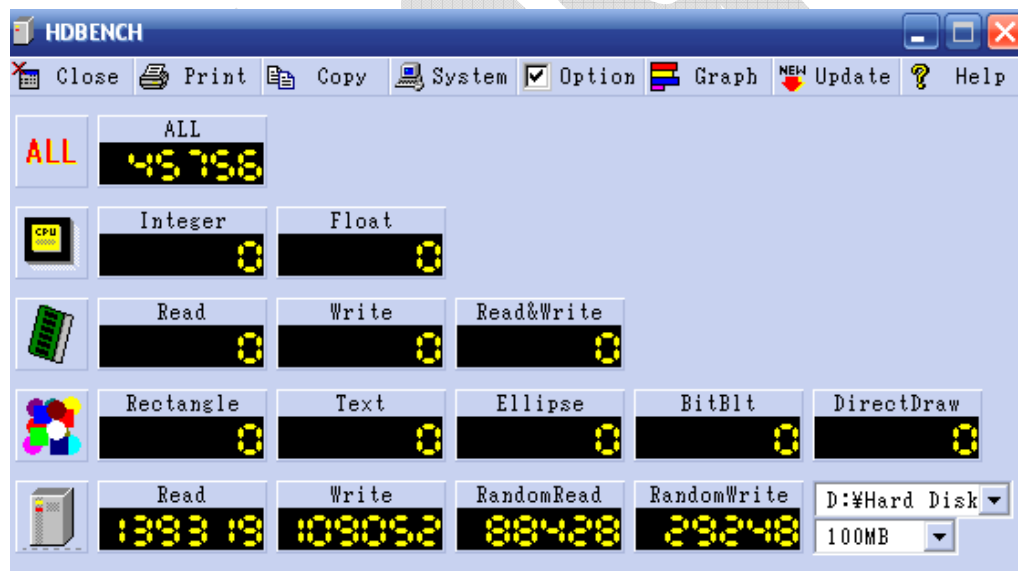
- Processor:** AMD Athlon 64 3000+, Orleans core, Socket AM2 (940), 90 nm process, 1.328 V core voltage. Cache: 64 KBytes L1, 512 KBytes L2.
- Motherboard:** BIOSTAR Group, NF520-A2 TE model, nForce 520 chipset, PCI-Express x16 interface.
- Memory:** DDR2, 1024 MBytes, 301.4 MHz frequency, CAS# 5.0, RAS# 5.0, tRP 5.0, tRAS 15.0, tRC 21.0.



### 2. ATTO Disk Benchmark Testing Result:

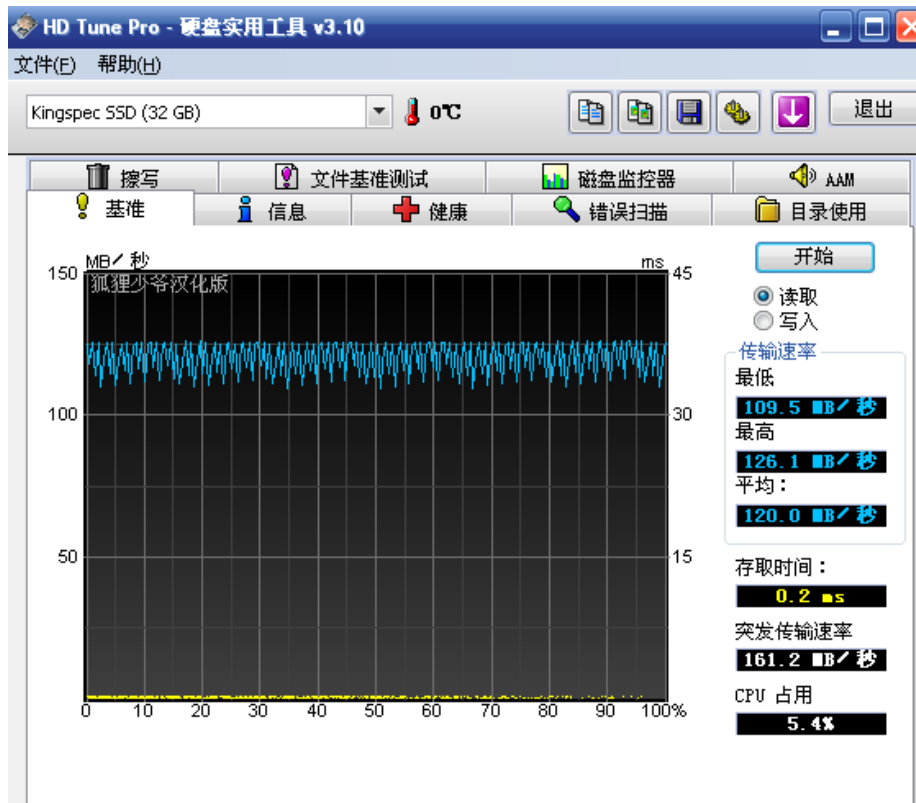


### 3. HDBENCH Testing Result:

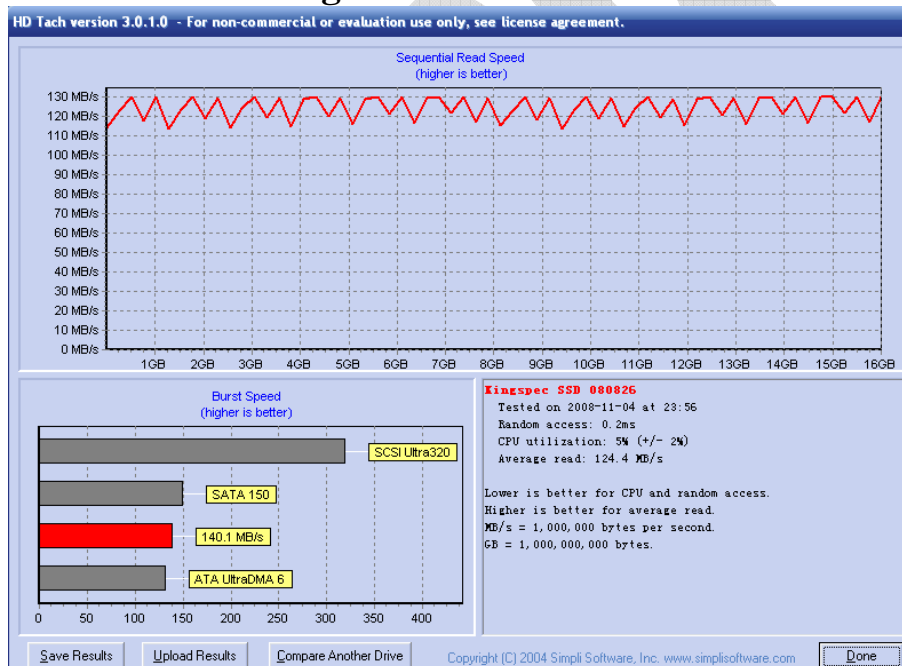




### 4. HD Tune Testing Result:



### 5. HD Tach Testing Result:





6. CrystalDiskMark Testing Result:

